



Sixth Form Options

St. David's College

2018-2019

Subject Choices

The following pages give a brief overview of the courses on offer at St David's College and include details on how the subject will be assessed for pupils beginning the course in 2018. More information is also available from individual departments.

The proposed option blocks for 2018-2019 are shown below.

Block 1	Block 2	Block 3	Block 4
Design Technology	Engineering	CAD	Sport
Business Studies	Mathematics	Applied Science	Art & Design
Biology	Geography	Chemistry	Physics
	Music	English Literature	History
		Performing Arts	

** Outdoor Ed **

** Outdoor Education will predominantly run on Wednesday afternoons and Weekends **



Art & Design (WJEC)

All Advanced courses within the Department offer a rich and diverse range of learning experiences. Pupils are encouraged to express themselves freely. Projects are devised to fire each individual's imagination and promote experimentation through inventive use of materials and techniques.

Skills are taught that allow all pupils to explore a range of practical and theoretical approaches from which they can develop personal work. Individual special abilities and interests are discovered, encouraged and developed. Our aim is to inspire confidence, enthusiasm and a sense of achievement at each stage of the course studied.



Course Structure – AS/A2 (Reformed A Level)

AS (1 unit)

AS Unit 1 Personal Creative Enquiry Non-exam Assessment 40% of qualification	160 marks
<p>An extended, exploratory project/portfolio and outcome/s based on themes and subject matter which are personal and meaningful to the learner. The Enquiry must integrate critical, practical and theoretical work.</p> <ul style="list-style-type: none"> • The critical, practical and theoretical work will be assessed holistically, using the assessment objectives. Learners will be required to select, evaluate and present their work for assessment. • The Personal Creative Enquiry will be determined by the learner and teacher, assessed by the teacher and externally moderated. • No time limit: duration to be determined by the centre. 	

A2 (the above unit plus the 2 units below)

A2 Unit 2 Personal Investigation Non-exam Assessment 36% of qualification	160 marks
<p>Consists of two integrated constituent parts:</p> <ol style="list-style-type: none"> 1. a major in-depth critical, practical and theoretical investigative project/portfolio and outcome/s based on themes and subject matter that have personal significance. 2. An extended written element of 1000 words minimum, which may contain images and texts and must clearly relate to practical and theoretical work using an appropriate working vocabulary and specialist terminology. <ul style="list-style-type: none"> • Both the practical/theoretical work and the written element will be assessed together using the assessment objectives. Learners will be required to select, evaluate and present their work for assessment. • The Personal Investigation will be determined by the learner and teacher, assessed by the teacher and externally moderated. • No time limit: duration to be determined by the centre. 	

A2 Unit 3 Externally Set Assignment Non-exam Assessment 24% of qualification	100 marks
<p>Consists of two parts:</p> <p>Part 1: Preparatory study period</p> <ul style="list-style-type: none"> • The externally set assignment materials are to be released to learners from 1 February (in the second year of the course) and will consist of a series of visual and written stimuli, which are to be presented to the learner at the start of the preparatory study period. • One of the stimuli is to be selected by the learner and used as a starting point from which to elicit a personal response. • Responses are developed during the preparatory study period. They should take the form of critical, practical and theoretical preparatory work/supporting studies which inform the resolution of ideas in the 15 hours sustained focus study. • Start and finish dates of the preparatory study period are to be determined by the centre, taking into account the May deadline for the submission of internally assessed marks to WJEC. <p>Part 2: 15 hour period of sustained focus work</p> <ul style="list-style-type: none"> • The resolution of learners' ideas from the preparatory work must be completed during the designated 15 hours and they must show how their planning relates to the outcome/s. • The period of sustained focus work must be completed under supervised conditions. • Centres determine the scheduling of the supervised sustained focus sessions, taking into account the May deadline for the submission of internally assessed marks to WJEC. <p>Both the preparatory work and sustained focus work will be assessed together, using the assessment objectives. Learners will be required to select, evaluate and present their work for assessment. The Externally Set Assignment will be set by WJEC, assessed by the teacher and externally moderated.</p>	

Business Studies (Edexcel)

Whatever career you want – working for a big company, going into the professions, becoming the next Richard Branson – it's all in Business Studies.

You will learn about how to market your product, how to raise finance, how to motivate people who work for you, how to run your organisation effectively, how your business will be affected by the world around you, and how to plan out your business's success.

Not only all this, but by learning which part of business interests you most, you will be able to choose the University business course which most suits your talents and taste.

Course Structure – BTEC Level 3 Subsidiary Diploma

The course will consist of 6 units of work, all of which are internally assessed.

The assessment approach of the BTEC qualifications in Business allows learners to receive feedback on their progress throughout the course as they provide evidence towards the assessment and grading criteria.

Business employers value employees who are able to communicate effectively both verbally and using electronic communication methods. The BTEC qualifications in Business provide opportunities for learners to develop their communication skills as they progress through the course. This can be both through presentations and discussions in which they have the opportunity to express their opinions. Learners are encouraged to take responsibility for their own learning and achievement, taking into account industry standards for behaviour and performance.



Design & Technology (WJEC)

We believe that design technology is much more than the national curriculum which tends to define what can be assessed. Our view of design and technology seeks to embrace the national curriculum and extend it into a full educational experience.

The core experience in designing technology is essentially about providing opportunities for students to develop their capability, through combining their designing and making skills with knowledge and understanding in order to create quality products. The DT department at St David's places emphasis on quality products as there is great benefit of students experiencing success and seeing and handling products that are well made. In addition we see the preparation of young people for citizenship in a technological society as a central activity within the subject.

The subject is delivered in a new state-of-the-art building which comprises:

- three fully equipped multimedia workshops.
- a dedicated design and graphic studio housing the latest PC-based graphics and design software, in addition to ample layout space.
- a dedicated computer aided design suite utilising the very latest in industrial CAD/CAM software including Autodesk solutions, Solidworks, Ashlar Vellum and Pro|Engineer Wildfire.
- access to top end animation software including t3DS Max, Form Z, Lightwave, Maya and Smoke.

Course Structure – AS/A2 (Draft Reformed A Level)

AS (2 units)

AS Unit 1: Written paper 1

Written examination: 2 hours

20% of qualification 80 marks

Learners take an examination in one of the following endorsed areas:

- engineering design
- fashion and textiles
- product design.

The examination includes a mix of structured and extended writing questions assessing learners' knowledge and understanding of:

- technical principles
- designing and making principles

along with their ability to:

- analyse and evaluate design decisions and wider issues in design and technology.

AS Unit 2: Design and make task

Non-exam assessment: approximately 40 hours

20% of qualification 80 marks

A design and make task, based on a brief developed by the candidate, assessing the candidate's ability to:

- identify, investigate and outline design possibilities
- design and make prototypes
- analyse and evaluate design decisions and wider issues in design and technology.

The design and make task will be based within the same endorsed area as the written examination.

A Level (the above plus a further 2 units)

A2 Unit 3: Written paper 2

Written examination: 2 hours 30 minutes

30% of qualification 100 marks

Learners take a single examination in one of the following endorsed areas:

- engineering design
- fashion and textiles
- product design.

The examination includes a mix of structured and extended writing questions assessing learners' knowledge and understanding of:

- technical principles
- designing and making principles

along with their ability to:

- analyse and evaluate design decisions and wider issues in design and technology.

A2 Unit 4: Design and make project

Non-exam assessment: approximately 60 hours

30% of qualification 100 marks

A sustained design and make project, based on a brief developed by the candidate, assessing the candidate's ability to:

- identify, investigate and outline design possibilities
- design and make prototypes
- analyse and evaluate design decisions and wider issues in design and technology.

The design and make project will be based within the same endorsed area as the written examination.

Performing Arts (Edexcel)

Performing arts is the window to a whole new world of career opportunities. Choosing to study for a BTEC Level 3 Performing Arts Qualification is a great decision to make for lots of reasons. This qualification will allow pupils to look into different areas of the performing arts, leading them into a whole range of professions and sectors and allowing them to explore their creativity in many ways.

The BTEC Level Performing Arts course is a vocational or work-related qualification. The assessment approach the qualification allows pupils to receive feedback on their progress after the completion of units throughout the course as they provide evidence towards the grading criteria.

Course Structure BTEC Level 3 Subsidiary Diploma

The BTEC qualifications in these specifications have been developed in the performing arts sector to:

- provide education and training for Performing Arts employees.
- give Performing Arts employees opportunities to achieve a nationally recognised Level 3 vocationally specific qualification which will give the same UCAS points as an A2 level qualification.
- give pupils the opportunity to enter employment in the Performing Arts sector
- give pupils the opportunity to develop a range of skills and techniques, personal skills and attributes essential for successful performance in working life.



Computer Aided Design

These courses are designed to equip students with 2-D drafting and 3-D modelling skills using the very latest industrial programs. All students on the course will produce an electronic portfolio of work which can be used to gain access to higher education courses or employment. Due to the advanced nature of the courses we have several agreements with universities who actively seek our students with these qualifications as prerequisites for degree level work. We have also been successful in gaining full-time employment the some of our leavers. The advanced level CAD qualification has an NVQ equivalency of 4/5 (degree level work).

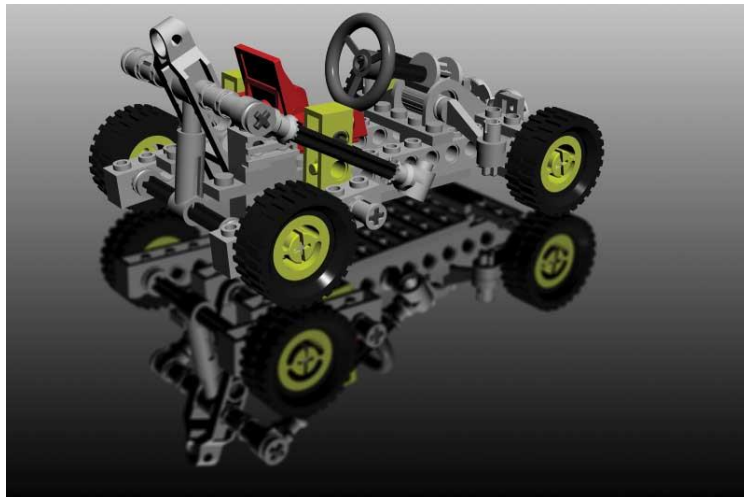
Career areas include all aspects of design, engineering and architecture, animation TV and video broadcast, web design, computer games design, technical illustration except, visualisation and animation and are often very successful in gaining employment – often as freelancers

Course Structure City & Guilds Level 1 – 3

The following courses are now on offer:

- Level I – award in CAD parametric modelling
- Level II – award in CAD parametric modelling
- Level III – award in CAD parametric modelling

- Level II – award in 2-D CAD
- Level III – award in 2-D CAD
- Level III – award in 3-D CAD



Engineering (City & Guilds)

The Level 2 Technical Award in Engineering allows you to understand the world of Engineering. If you like to explore how things work and are keen to develop technical skills, then this qualification is for you. What will the student study as part of this qualification?

You will develop an understanding of how ideas for engineered products are communicated between engineers, including the use of Computer Aided Design (CAD) systems. You will also learn how ideas are turned into prototypes and have the opportunity to develop skills needed to produce and evaluate a prototype.

The qualification has two units:

- Engineering communication
- Engineering development

The qualification develops the following knowledge, understanding and skills:

- the use of standard measurement in engineering
- an understanding of how and why different materials are used in engineered products
- the features and applications of mechanical and electrical components
- how to interpret and produce engineering drawings using CAD systems
- how to use a variety of commercial and prototype technologies
- how to evaluate products against design criteria.

Your understanding developed is fundamental to an introduction to any aspect of engineering, including:

- Aerospace
- Automotive
- Civil
- Mechanical
- Electrical
- Electronic
- Maintenance
- Design
- Building services • Nuclear



English Literature (Edexcel)

Want to develop your interest and enjoyment of English Literature? Want to learn how to read independently and critically?

Then this is the course for you!

You will be introduced to the traditions of English literature and read widely – drama, poetry and prose, writers from the present, the past and abroad.

You will develop into a confident, independent and thoughtful reader, and will learn to express yourself articulately in both speech and writing.

Don't worry if you haven't taken Literature at GCSE - it may help, but it's not necessary.



Course Structure AS/A2 Level

Component 1: Drama	*Paper code: 9ET0/01
<ul style="list-style-type: none"> Externally assessed Availability: May/June First assessment: 2017 	30% of the total qualification
Overview of content Students study: <ul style="list-style-type: none"> one Shakespeare play and one other drama from either tragedy or comedy – both texts may be selected from one or both of these categories. critical essays related to their selected Shakespeare play. Students' preparation is supported by <i>Shakespeare: A Critical Anthology – Tragedy or Shakespeare: A Critical Anthology – Comedy</i>. 	
Overview of assessment <ul style="list-style-type: none"> Written examination, lasting 2 hours and 15 minutes. Open book – clean copies of the drama texts can be taken into the examination. The Critical Anthology must not be taken into the examination. Total of 60 marks available – 35 marks for Section A and 25 marks for Section B. Two sections: students answer one question from a choice of two on their studied text for both Section A and Section B. Section A – Shakespeare: one essay question, incorporating ideas from wider critical reading (AO1, AO2, AO3, AO5 assessed). Section B – Other Drama: one essay question (AO1, AO2, AO3 assessed). 	

Component 2: Prose	*Paper code: 9ET0/02
<ul style="list-style-type: none"> Externally assessed Availability: May/June First assessment: 2017 	20% of the total qualification
Overview of content Students study: <ul style="list-style-type: none"> two prose texts from a chosen theme. At least one of the prose texts must be pre-1900. 	
Overview of assessment <ul style="list-style-type: none"> Written examination, lasting 1 hour. Open book – clean copies of the prose texts can be taken into the examination. Total of 40 marks available. Students answer one comparative essay question from a choice of two on their studied theme (AO1, AO2, AO3, AO4 assessed). 	



Component 3: Poetry	*Paper code: 9ET0/03
<ul style="list-style-type: none"> Externally assessed Availability: May/June First assessment: 2017 	30% of the total qualification
Overview of content Students study: <ul style="list-style-type: none"> poetic form, meaning and language a selection of post-2000 specified poetry and a specified range of poetry from: <ul style="list-style-type: none"> either a literary period (either pre- or post-1900) or a named poet from within a literary period. 	
Overview of assessment <ul style="list-style-type: none"> Written examination, lasting 2 hours and 15 minutes. Open book – clean copies of the poetry texts can be taken into the examination. Total of 60 marks available – 30 marks for Section A and 30 marks for Section B. Two sections: students answer one question from a choice of two, comparing an unseen poem with a named poem from their studied contemporary text and one question from a choice of two on their studied movement/poet. Section A – Post-2000 Specified Poetry: one comparative essay question on an unseen modern poem written post-2000 and one named poem from the studied contemporary text (AO1, AO2, AO4 assessed). Section B – Specified Poetry Pre- or Post-1900: one essay question (AO1, AO2, AO3 assessed). 	

Coursework	*Code: 9ET0/04
<ul style="list-style-type: none"> Internally assessed, externally moderated Availability: May/June First moderation: 2017 	20% of the total qualification
Overview of content Students have a free choice of two texts to study. Chosen texts: <ul style="list-style-type: none"> must be different from those studied in Components 1, 2 and 3 must be complete texts and may be linked by theme, movement, author or period may be selected from poetry, drama, prose or literary non-fiction. 	
Overview of assessment Students produce one assignment: <ul style="list-style-type: none"> one extended comparative essay referring to two texts (AO1, AO2, AO3, AO4, AO5 assessed) advisory total word count is 2500–3000 words total of 60 marks available. 	

Geography (WJEC)

A decision to choose Geography in the 6th form will be an excellent one! The course will allow you to strengthen knowledge, skills and develop research methods to leave school life as a highly adaptable, employable and desirable individual.

The courses add detail to that learnt during GCSE whilst also introducing a vast array of new topics.



During the course of the two years there will be ample opportunities for field visits, including an opportunity to take part and represent a country of your choice in a model United Nations conference.

The Department prides itself on being well resourced with textbooks and field equipment as well as digitally and online. Department members are specialist and enthusiastic and integrate their own experiences of global travel and Geography into lesson content. This caters for a wide-ranging form of teaching and learning styles, meeting the needs of every student.

Course Structure AS/A2 (reformed from 2016)

AS (2 units)

AS Unit 1: Changing Landscapes

Written examination: 2 hours

24% of qualification

96 marks

Section A: Changing Landscapes

Choice between two themes, **either** Coastal **or** Glaciated Landscapes; two compulsory structured questions with data response

Section B: Tectonic Hazards

Three compulsory structured questions with data response

AS Unit 2: Changing Places

Written examination: 1 hour 30 minutes

16% of qualification

64 marks

Section A: Changing Places

Two compulsory structured questions with data response

Section B: Fieldwork Investigation in Physical and Human Geography

Three compulsory structured questions with data response on fieldwork and the learner's own fieldwork investigation

Geography (WJEC) continued.....

A Level (the above plus a further 3 units)

A2 Unit 3: Global Systems and Global Governance

Written examination: 2 hours

24% of qualification

96 marks

Section A: Global Systems

Water and Carbon Cycles: two compulsory structured questions with data response and one extended response question

Section B: Global Governance: Change and Challenges

Processes and patterns of global migration and global governance of the Earth's oceans: two compulsory structured questions with data response and one extended response question

Section C: 21st Century Challenges

One compulsory extended response question drawing on Units 1, 2 and 3 with resource material

A2 Unit 4: Contemporary Themes in Geography

Written examination: 2 hours

16% of qualification

64 marks

Section A: Tectonic Hazards

One compulsory extended response question

Section B: Contemporary Themes in Geography

Select two optional themes from four:

- Ecosystems
- Economic Growth and Challenge: India or China or Development in Sub-Saharan Africa
- Energy Challenges and Dilemmas
- Weather and Climate

Two essay questions, one on each chosen theme

A2 Unit 5: Independent Investigation

Non-exam assessment: 3000 – 4000 words

20% of qualification

80 marks

One written independent investigation, based on the collection of both primary data and secondary information

History (OCR)

Why study history?

History isn't a subject that is stuck in the past. Far from it! Historical events have shaped who we are today and this is true across the world. Did you know that Magna Carta, a document signed in 1215, is the basis of the US constitution?

The A level History course is designed to help you understand the value and significance of world events in the past. In the process, you will gain deeper understanding of social, cultural, religious and ethnic diversity. Knowing how people lived in the past helps us to understand why people act like they do today.

Skills that history students develop:

- The ability to analyse
- The ability to make informed criticisms
- Independent research skills
- Organization
- The ability to listen and work with others
- To develop your own opinion



Course Structure A2 – reformed 2015

This is a two year A level course with all examinations being taken in year 13

A level Units

Unit 1; England 1547-1603: The Later Tudors (Enquiry topic: Mid Tudor Crisis 1547-1558) – 1h 30min written examination (25%)

Unit 2; The USA in the 19th Century: Westward expansion and Civil War 1803-c.1890- 1h 30min 1h 30min written examination (15%)

Unit 3; Popular Culture and the Witch craze of the 16th and 17th Centuries- 2h 30min written examination (40%)

Unit 4; Topic based essay. This is a 3000-4000 word essay on an historical topic of the pupil's choice. This unit is pupil led research and the topic they will study will be discussed with the teachers. (20%)



Mathematics (AQA)

The course for AS and A2 maths naturally follows on from GCSE. This is a course worth studying in its own right or as a supporting subject for the physical and social sciences. It requires a high degree of commitment in students from the start of Year 12 and is of particular value to those thinking of higher education based on the sciences.

Whilst studying mathematics you will be expected to:

- Use mathematical skills and understanding to solve problems, including problems that are faced in real life contexts.
- Solve complex problems by using mathematical arguments and logic.
- Simplify real life situations and use mathematics to show what is happening and what could happen in different circumstances.
- Use calculator and other technology.

CORE MATHS - When studying core maths you will be extending your knowledge of topics studied at GCSE and learn about new ideas such as calculus and the equations of circles. Ideas in the core modules are the foundation for mathematical exploration. It is in the core modules that you learn the techniques to solve problems in other areas such as mechanics.

MECHANICS - Mechanics is the study of the motion of objects and how they respond to forces acting upon them. You will learn the technique of mathematical modelling to simplify real life situation to help analyse problems. Many of the ideas met here are an introduction to areas such as Physics and Engineering.

DECISION MATHS - In this you will learn how to apply methods to solve practical problems such as finding the shortest path from one place to another, or making decisions that will help a company maximise its profits or reduce costs.

Course Structure A2 – draft

2017

The course follows the AQA syllabus for A2 mathematics.
The course is split into 3 modules, each worth 1/3 of the A Level.

Each module is assessed with a 2 hour exam. There is no coursework.

$$\frac{\partial}{\partial \theta} \ln f_{a, \sigma^2}(\xi_1) = \frac{(\xi_1 - a)}{\sigma^2} f_{a, \sigma^2}(\xi_1) = \frac{1}{\sqrt{2\pi\sigma^2}} \exp\left\{-\frac{(\xi_1 - a)^2}{2\sigma^2}\right\} \frac{\partial}{\partial a}$$
$$\int_{\mathbb{R}_n} T(x) \cdot \frac{\partial}{\partial \theta} f(x, \theta) dx = M\left(T(\xi) \cdot \frac{\partial}{\partial \theta} \ln L(\xi, \theta)\right) = \int_{\mathbb{R}_n} T(x) \cdot \left(\frac{\partial}{\partial \theta} \ln L(x, \theta)\right) \cdot f(x, \theta) dx = \int_{\mathbb{R}_n} T(x) \cdot \left(\frac{\partial}{\partial \theta} \ln f(x, \theta)\right) \cdot f(x, \theta) dx$$
$$\frac{\partial}{\partial \theta} \ln f_{a, \sigma^2}(\xi_1) = \frac{(\xi_1 - a)}{\sigma^2} f_{a, \sigma^2}(\xi_1) = \frac{1}{\sqrt{2\pi\sigma^2}} \exp\left\{-\frac{(\xi_1 - a)^2}{2\sigma^2}\right\} \frac{\partial}{\partial a}$$

Music (Edexcel)

This is a modular, practically based course which focuses on performing and composing music in any style. You need to be able to play or sing, or DJ for this course.



The course teaches the knowledge and skills you will need to work in the music industry, and how different organisations collaborate to make it work. You will work as part of a band to plan and market performances and concerts, and you will learn about musical equipment and the recording studio.

Why Choose BTEC?

- * The course is recognised by universities and employers, and carries UCAS points. Every year, 100,000 BTEC students successfully apply to university in the UK.
- * Assessment happens throughout the course, there are no final written exams
- * You can present your work in a variety of ways.

Course Structure BTEC Level 3 Subsidiary Diploma

There are 6 modules over the 2 year course. The Certificate option includes the first 3 modules over one year.

1. Performance Techniques. You learn how to work a soloist and as part of a band, and perform in the Christmas Concert.
2. The Sound and Music Industry. You investigate the various organisations that make up this diverse Industry
3. Pop Music in Practice. You learn about the history of Pop from 1950, you write pop songs, and you perform cover songs in Band Night.
4. Music Project. As a group, you organise and perform in a concert. You are responsible for all aspects of the concert, from decorations and catering to the setlist itself.
5. Marketing. You learn marketing strategies, and then work with the school's marketing manager to promote the annual School Musical to the public.
6. Musical Ensemble. Develop and perform as a Band both in and out of school.

BTEC music opens doors to careers in Performing, Producing, Composing, and Sound Engineering, and really develops you as a musician. You would be expected to take a full part in the musical life of the school, and be an excellent role model for the younger years.

Duke of Edinburgh Award Scheme

St David's College uses the Duke of Edinburgh's Award scheme to provide an enjoyable, challenging and rewarding programme of high quality personal development.

The Duke of Edinburgh Award scheme encourages people to undertake exciting, constructive, adventurous and enjoyable activities in their free time. The Award gives them a voice; supports them in developing personal and social relationships; enables them to learn for life; lead healthy lifestyles and helps to manage risk.

There are many benefits that St David's students who complete a Bronze, Silver or Gold Duke of Edinburgh's Award. Some of these are listed below:

- self-belief
- self-confidence
- a sense of identity
- independence of thought and action
- a sense of responsibility
- an awareness of your potential
- understanding strengths and weaknesses
- public recognition for achievements
- the ability to plan and use time effectively
- the ability to learn from and give back to others in the community
- new relationships
- skills including problem-solving, presentation and communication
- the ability to lead and work as part of a team
- sense of satisfaction in meeting and succeeding a series of different challenges



Sport (Edexcel)

Do you have a healthy interest in sport? Not that keen on end of year examinations?



Then you may be interested in the BTEC level 3 subsidiary diploma in Sport.

The skills you pick up here will be extremely valuable to you in all walks of life.

The subsidiary diploma is equivalent to an A-level, but that is where the similarity ends.

Course Structure BTEC Level 3 Subsidiary Diploma

Students study six units over a two-year period. These units ranging content from:

- the body in action
- health and safety in sport
- training and fitness for sport.

To the more hands-on:

- fitness testing for sport and exercise
- practical team sports
- leadership in sport



The work can be assessed in a variety of different formats. You may choose to hand in your work as a written assignment or you may choose to give a PowerPoint presentation. Other formats may include newsletters, logs and diaries or even an information sheet – poster for a local gym or sports club.

See you in the gym!

Applied Science (Edexcel)

This course is ideal for anyone who is interested in science and would like a qualification equivalent to an A Level, but doesn't want to specialize in the individual Science A Levels. Units within the qualification cover areas of laboratory science, forensic science, medical science, environmental science and biological, chemical and physical science to provide a route to employment in the science industry or within organisations that use science.

Course Structure BTEC Level 3 Subsidiary Diploma

Units offered include: fundamentals of science, working in the science industry, scientific practical techniques, perceptions of science, and chemical laboratory techniques.

As part of the course you will be expected to complete assignments from a total of 6 different units. As with other BTEC courses, the work can be assessed in a variety of different formats. You may choose to hand in your work as a written assignment or you may choose to give a PowerPoint presentation. Practical work can also be assessed by observation by the teacher.



Biology (Edquas)

What's inside a cell?

How do enzymes work?

Crack the genetic code and find out about plumbing in plants and animals.

Love living things?

Biology is for you!

To take the A level Biology you should have a good pass mark at GCSE in Science and ideally have a GCSE in Additional Science. There is a significant amount of practical work in this subject.

Course Structure AS/A2 Reformed A Level

This specification is a linear course divided into a total of 3 units. The weightings are listed below.

AS Unit 1 - Basic Biochemistry and Cell Organisation

Written examination: 1 hour 30 minutes (80 marks)

A range of short and longer structured questions and one extended response.

AS Unit 2 - Biodiversity and Physiology of Body Systems

Written examination: 1 hour 30 minutes (80 marks)

A range of short and longer structured questions and one extended response.

A Level (the above plus a further 3 units)

Component 1 – Energy and the Environment

Written examination: 2 hours (100 marks)

A range of short and longer structured questions and one extended response.

Component 2 - Variation, Inheritance and Options

Written examination: 2 hours (100 marks)

Chemistry (WJEC)

What's that smell?

Why did that go bang?

Why didn't that go bang?

How do I clear up this mess?

Asked any of these questions before? Chemistry is for you.

To take A level Chemistry you should have a good pass mark at GCSE in Science, Additional Science and Maths. There is a significant amount of practical work in this subject. Students will sit the AS exam at the end of Year 12 and can exit the course at this point or can continue to A2 provided they have achieved a pass in Units 1 & 2.

Course Structure AS/A2 A Level

AS (2 units)

AS Unit 1 - The Language of Chemistry, Structure of Matter and Simple Reactions

Written examination: 1 hour 30 minutes (80 marks)

A range of short answer, structured and extended response questions.

AS Unit 2 - Energy, Rate and Chemistry of Carbon Compounds

Written examination: 1 hour 30 minutes (80 marks)

A range of short answer, structured and extended response questions.

A Level (the above plus a further 3 units)

A2 Unit 3 - Physical and Inorganic Chemistry

Written examination: 1 hour 45 minutes (80 marks)

A range of short answer, structured and extended response questions.

A2 Unit 4 - Organic Chemistry and Analysis

Written examination: 1 hour 45 minutes (80 marks)

A range of short answer, structured and extended response questions.

A2 Unit 5 - Practical (60 marks)

This unit comprises two tasks:

Experimental Task (30 marks)

Practical Methods and Analysis Task (30 marks)

Physics (WJEC)

How does it work?
Why does it do that?
Where has that come from?
What do you mean, light is not a wave?
Interested – your type of question?
Physics is for you.

To take A level Physics you should have a good pass mark at GCSE in Science, Additional Science and Maths.

Course Structure AS/A2 A Level

The concept-led approach to AS and A level Physics begins with a study of the laws, theories and models of physics, and finishes with an exploration of their practical applications.

AS (2 units)

AS Unit 1
Motion, Energy and Matter
Written examination: 1 hour 30 minutes (80 marks)
20% of qualification

A mix of short answer and extended answer structured questions with some set in a practical context.

AS Unit 2
Electricity and Light
Written examination: 1 hour 30 minutes (80 marks)
20% of qualification

A mix of short answer and extended answer structured questions with some set in a practical context.

A Level (the above plus a further 3 units)

A2 Unit 3
Oscillations and Nuclei
Written examination: 2 hours 15 minutes (100 marks)
25% of qualification

Section A: 80 marks
A mix of short answer and extended answer questions with some set in a practical context.
Section B: 20 marks - one comprehension question.

A2 Unit 4
Fields and Options
Written examination: 2 hours (100 marks)
25% of qualification

Section A: 80 marks
A mix of short answer and extended answer questions with some set in a practical context.
Section B: 20 marks - choice of 1 out of 4 options: Alternating Currents, Medical Physics, The Physics of Sports, Energy and the Environment.

A2 Unit 5
Practical examination (50 marks)
10% of qualification

This unit comprises two tasks.

- Experimental Task (25 marks)
- Practical Analysis Task (25 marks)

Outdoor Education (Edexcel)

The Edexcel BTEC Level 3 specialist qualifications in Skills and Activities for Active Leisure (Outdoor Education) have been developed to give people the opportunity to:

- gain a qualification that is an additional specialist learning component of a Diploma
- develop specialist skills in exercise and fitness instruction in the sport and active leisure sector
- achieve a standalone qualification in exercise and fitness instruction in the sport and active leisure sector
- achieve a nationally recognised Level 3 vocationally-related qualification
- progress to related general and/or vocational qualifications
- engage in learning that is relevant to them and which will provide opportunities to develop a range of skills and techniques, personal skills and attributes essential for successful performance in working life.

BTECs are understood and recognised by a large number of organisations in a wide range of sectors. BTEC qualifications are developed with key industry representatives and Sector Skills Councils (SSC) to ensure that they meet employer and learner needs — in this case the SkillsActive SSC.

Course Structure BTEC Level 3 Specialist Qualification

All units within these qualifications are internally assessed. The qualifications are criterion referenced, based on the achievement of all the specified learning outcomes.

Each of the units within the qualifications have specified assessment criteria and grading criteria which must be used. A summative unit grade can be awarded at pass, merit or distinction. Units studied are:

- *Skills for Water Based Outdoor & Adventurous Activities*
- *Skills for Land Based Outdoor & Adventurous Activities*
- *Outdoor & Adventurous Activities*
- *Taking responsibility for a sail craft*
- *Outdoor & Adventurous Expeditions*
- *Alternative pursuits for Outdoor Adventure*

It is anticipated that along with the completion of this BTEC course, additional Outdoor Education certificates can be achieved for the successful candidate. Enrollment on this course would also be enhanced by completion of the Silver/Gold Duke of Edinburgh Award.

Glossary

ACCREDITATION / CASH-IN

When a course, or part of a course, is given credit or certification by an examining body.

AQA

AQA Education is an Exam Board and awards qualifications

BTEC

A vocational qualification which is mainly assessed by continual assessment. A Level 3 Subsidiary Diploma is equivalent to an A2 level qualification and is accepted as equivalent by Universities. A pass at BTEC L3 is equivalent to an E at A2, a merit is equivalent to a C grade at A2 and a distinction is equivalent to an A at A2.

Edexcel

Edexcel is an Exam Board and awards qualifications. It is also sometimes referred to as Pearson

LINEAR

This describes a course which has one exam at the end.

MODULAR

This is a course which has smaller exams which all add up to the overall examination.

OCR

OCR is an Exam Board and awards qualifications.

UCAS

The University Admissions process. This awards points for qualifications and to gain entry to University you usually require a certain number of UCAS points. Applications to University courses is done through UCAS and the process is started in the final term of Year 12.

VOCATIONAL COURSES

GCSE, CACHE or BTEC courses that are based upon specific career/vocational areas such as Music and Business..

WJEC

Welsh Joint Examination Committee is an Exam Board and awards qualifications.